

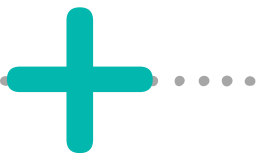
Anaphylaxis is likely when ONE of the following three criteria is fulfilled:

Reactions can happen within minutes to hours of exposure to an allergen.

1 Sudden onset of illness of skin, lungs, or both

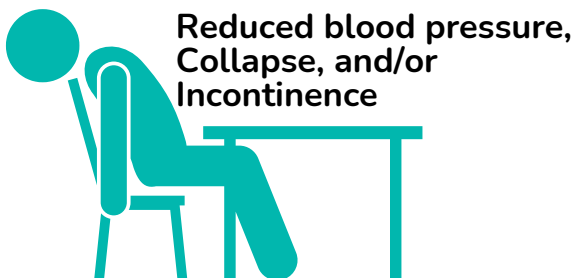


Hives, Itching, Flushing, and/or Swollen lips/tongue



Coughing, Wheeze, Stridor, and/or Shortness of breath

Or



Reduced blood pressure, Collapse, and/or Incontinence

Or

2 TWO or more of the following occurs suddenly after exposure to allergen



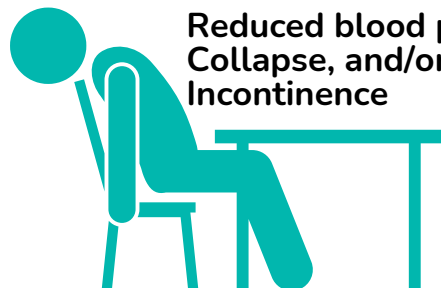
Hives, Itching, Flushing, and/or Swollen lips/tongue



Coughing, Wheeze, Stridor, and/or Shortness of breath



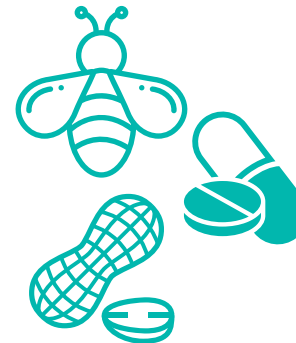
Nausea, Vomiting, and/or Abdominal pain



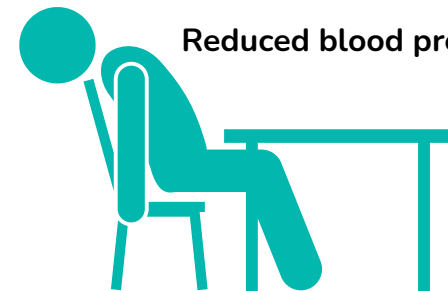
Reduced blood pressure, Collapse, and/or Incontinence

Or

3 Reduced blood pressure after exposure to a known allergen



Exposure to a KNOWN allergen



Reduced blood pressure

This graphic is an adaptation of the diagnostic criteria of anaphylaxis.

These criteria were developed in 2006 by a multinational and multidisciplinary work group assembled by the National Institute of Allergy and Infectious Disease (NIAID) and Food Allergy and Anaphylaxis Network (FAAN). The workgroup included allergist-immunologists, emergency physicians, pediatricians, critical care specialists, internists, and key stakeholders from across the globe. These criteria have since been adopted by the American Academy of Allergy, Asthma and Immunology; the American College of Allergy, Asthma and Immunology; the World Allergy Organization; and Code Ana.

